

# V8000

digital press

print-on-demand solutions



print > monitor > compose > print > monitor > compose > print > monitor > compose > print > monitor > compose > print > monitor > compose

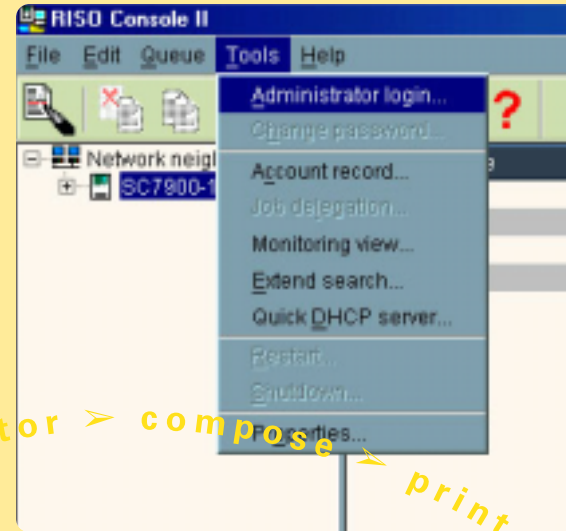
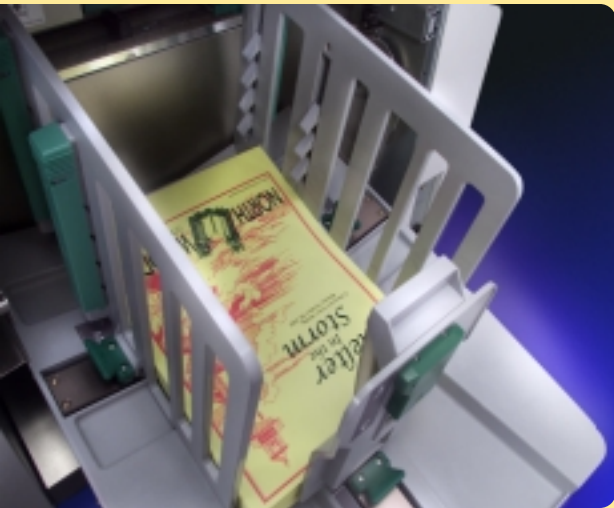


V8000

# V8000 digital press

Take your documents from imagination to completion in less time and in more color with RISO's V8000 Digital Press. Powered by Zykros™ technology that enables the imaging and printing of multiple colors in a single pass, the V8000 two-color, one-pass digital press will help you increase production and decrease downtime as you print short- to medium-run length print-on-demand jobs.

The secret to the V8000 Digital Press is in the V-configuration. Two print cylinders work in tandem with a specialized impression cylinder to create high-quality solids, delicate fine lines, and detailed photographs. The V8000 offers a unique and versatile solution to businesses seeking highly productive, economical short-run printing.



## Expanded Output Capabilities

From bulletins to newsletters, from postcards to seminar outlines, and from announcements to invitations, the V8000 digital press is the solution for your medium-length printing requirements. The V8000 can produce high-quality copies with one or two vibrant colors and superior solids in one pass at up to 7,200 prints per hour.

The V8000 offers the option of 70 stock colors and an unlimited custom color assortment for customized spot color printing on a variety of paper stocks in sizes from 4" x 6" to 11" x 17". Eye-catching colors and easy operation add up to expanded printing capabilities for you.

## Ease of Operation

With a compact operations panel and large size Touch Screen LCD display, the V8000 is easy to operate. Walk-up jobs can be processed with just a few touches of the keypad. The Touch Screen display provides helpful information in well-designed, easy-to-read screens, enabling you to control every step of your print job with ease. You can even make adjustments to the print cylinder to fine tune alignment.

Processing electronic jobs through the optional PostScript™ RIP is even faster, and color separation through the computer requires only a few mouse clicks.

## Network Integration

The V8000 arrives ready to connect to your standalone PC, and can easily connect to a Macintosh or network with the addition of a Net B card or SC7900 System Controller. DHCP compatibility makes the V8000 as easy to connect to your existing network as a laser printer.

The V8000 comes standard with a 32MB PCMCIA Document Storage Card (DM-32) that enables users to store jobs in the V8000 and then print them directly from the V8000 control panel. It also includes enhanced imaging software for high-quality output of text, plus RISO printer drivers that will help you produce high-quality photographs, eliminating the need for expensive desktop publishing programs.

## Print Management

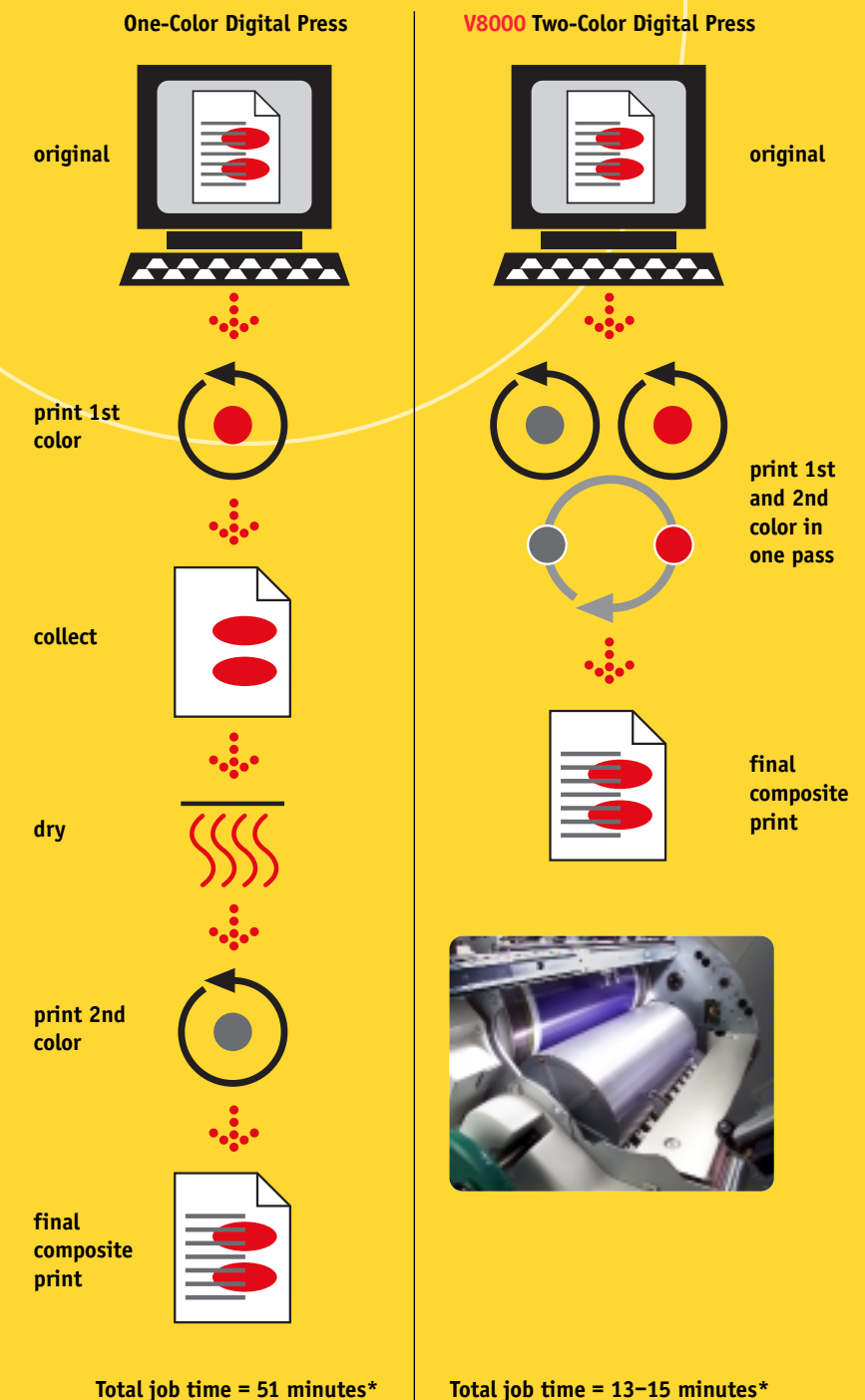
The V8000 is equipped with many features that enable users to print and monitor over a network, allowing users to efficiently monitor print jobs from start to completed copy directly from their computers.

Add an SC7900 System Controller if PostScript 3 compatibility is needed for additional scanning, printing, and monitoring capabilities. Built-in job tracking capabilities allow for accurate print job allocation and easy customer and department billing. Custom queues can save you time and ensure uniformity of frequently run jobs. An unlimited number of queues can be set up with pre-defined printing styles, and each can be designated as public or private.

## Zykros Technology

"Zykros" is a derivative and adaptation of the Greek words meaning "two color." RISO's Zykros technology is based on a unique "V" formation of the printing system within the machine. Dual imaging cylinders featuring inner press technology, with an impression cylinder beneath them, create a V-shaped path to produce printed output with multiple colors in a single pass. As a result of the Zykros technology, productivity is increased tremendously, colors are more vibrant, and solids are of exceptional quality.

V8000 productivity



\*based on a job run of 1,000



# s p e c i f i c a t i o n s

## digital press specifications:

<b>processing</b>	High-speed fully automatic digital scanning, thermal screening printing system
<b>first copy time</b>	First color: 75 seconds; second color: 160 seconds
<b>printing speed</b>	5 steps (60, 80, 100, 110, 120 impressions per minute)
<b>original size and type</b>	From stage glass: book/sheet 2" x 3.5" to 11.625" x 17" (50 x 90 mm to 297 x 432 mm)  In the optional ADF: 50 sheets 3.5" x 5.5" to 11.625" x 17" (90 x 140 mm to 297 x 432 mm)
<b>paper size and weight</b>	3.9" x 5.8" to 13.3" x 17.3" (99 x 147 mm to 338 x 439 mm)  13 lb. bond to 110 lb. index (46 g/m <sup>2</sup> to 210 g/m <sup>2</sup> )
<b>image area</b>	11.8" x 16.8" (299 x 426 mm)
<b>paper capacity</b>	1000 sheets in feed tray and receive trays 20 lb. bond (75 g/m <sup>2</sup> )
<b>preset reduction/enlargement</b>	50%, 61%, 65%, 78%, 121%, 129%, 154%, 200%
<b>zoom reduction/enlargement</b>	50%-200% in 1% increments, asymmetric size adjustment
<b>standard features</b>	Direct Touch-Control Display, Tone Curve Adjustment, Print Speed/Density Control, Automatic/Manual Scanning Contrast Adjustment, Photo Enhancement, Duo Processing, Bound Document Processing, Confidential Mode, Energy Saving Mode (Auto Power Off/Auto Sleep), Automatic Idle, Auto Process, Supply Status Detection, Multi-up Printing (2-, 4-, 8-, 16-up, 4 tickets), Programmed Printing, Print Job Memory Mode, Master Renewal, Double Feed Check Status Control, Initial Setting Customization, Paper Size Detection, Preventive Maintenance Indicator, Independent Cylinder Control, Document Storage Card (32MB), and ISC (Integrated System Controller) Network Interface
<b>options</b>	Color Print Cylinders, System Controller for PostScript 3 Compatibility, Auto Paper Stacking Guide Control, Net B Card, Automatic Document Feeder, Edit Board, Job Separator, and Key Card Counter
<b>electrical</b>	120 VAC, 60 Hz <5.0 A>
<b>weight</b>	530 lbs. (240 kg)
<b>dimensions (w x d x h)</b>	55.1" x 30.3" x 43.3" (1400 x 770 x 1100 mm)

## optional Adobe® PostScript® 3™ system controller specifications\*:

<b>interface unit type</b>	External box
<b>CPU</b>	266MHz (Pentium II equivalent)
<b>dimensions (w x d x h)</b>	7.87" x 11.81" x 13.23" (200 x 300 x 336 mm)
<b>power requirements</b>	100 to 125VAC, 50/60 Hz 200 to 240VAC, 50/60 Hz
<b>power consumption</b>	48W
<b>operating temperature and humidity</b>	41°F to 104°F (5°C to 40°C) with 40% to 70% (non-condensing)
<b>weight</b>	16.53 lb. (7.5 kg)
<b>available PDL (Page Description Language)</b>	Adobe PostScript 3
<b>computer requirements</b>	OS: Windows 95/98/ME, Windows NT 4.0, Windows 2000 and Mac OS 8.6-9.1  Additional Software Requirements: Web Browser 4.0 or higher
<b>available input port (input interface)</b>	Parallel (IEEE 1284 B), Ethernet (10BASE-T/100BASE-T), Serial (RS-232C) for status monitoring
<b>available network protocol</b>	Phase2 Apple EtherTalk, TCP/IP, NetBIOS over TCP/IP, LPR, SNMP, SMTP, HTTP
<b>memory</b>	32MB (Expandable up to 256MB)
<b>resident hard disk</b>	3.2GB (Free Space: Approximately for Download font 1GB, Job Spooling 1GB)
<b>resident fonts</b>	Adobe PostScript Type 1: 155 fonts TrueType: 36 fonts Multiple Master fonts: 2 fonts
<b>output resolution</b>	600 x 600
<b>front panel features</b>	4 buttons: Stop, Start, Function and POWER 3 LEDs: Ready/Data, Page Standby, and ERROR
<b>installable utilities</b>	RISO Console II (Status monitoring and document management), RISO Scan II (Scanning over Ethernet, including TWAIN driver), ATM, Printer Driver Installer

\*SC7900 Adobe PostScript 3 System Controller is required for most color applications.



**RISO, Inc.**  
300 Rosewood Drive  
Danvers, MA 01923  
Tel: 800-876-7476 (ext. 501)  
[www.riso.com](http://www.riso.com)

©Copyright 2002 RISO, Inc. All rights reserved.  
No part of this document may be reproduced  
without permission of RISO, Inc. All products  
are trademarks of their respective companies.  
Specifications subject to change without notice.

Printed in USA  
Item #MC8078

# V8000

digital press